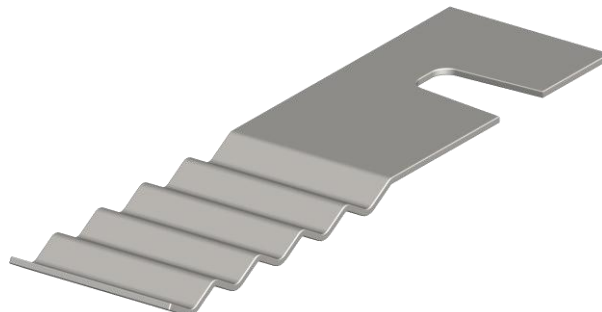


Technical Data Sheet

ACS Column Tie

- ✓ 150 – 300mm Long
- ✓ BS EN 845 -1 Compliant
- ✓ Type 2 Tie
- ✓ No Site Drilling or Post Fixing



Technical Data

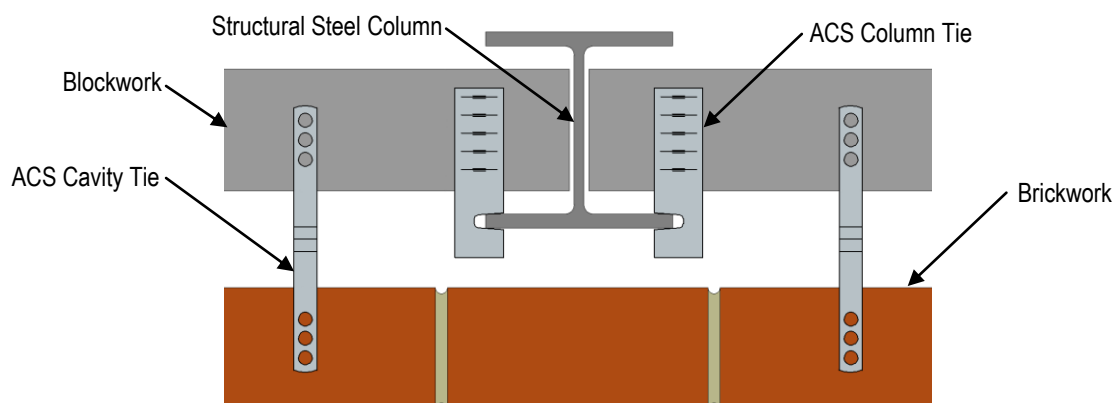
The ACS Column Tie eliminates the process of site drilling and bolting otherwise associated with the installation of frame cramps to structural columns. The tie is available in Austenitic stainless steel grades 304 (BS EN 1.4301) and 316 (BS EN 1.4401) and exceeds the requirements of a Type 2 tie according to BS EN 845-1.

The tie is supplied as a 150mm length as standard, the size of the notch in the tie is determined by the column flange thickness, please use the table (right) to specify the correct tie.

| Column Flange Thickness | ACS Reference |
|-------------------------|---------------|
| 9-11mm | CT/A |
| 11-13mm | CT/B |
| 13-17mm | CT/C |
| 17-21mm | CT/D |
| 21-27mm | CT/E |

Installation and Best Practice

Below is a typical plan view of a cavity wall with ACS Column Ties installed, the column tie can be used to restrain the inner or outer leaf of masonry to the flanges of the structural column and should be installed at 225mm vertical centres. The inner and outer leaf of masonry can then be tied together using suitable cavity wall ties. When installing the ACS Column Tie ensure the tie is engaged at least 10mm into the column flange.



For further information or technical assistance please contact the ACS Technical Department on 0844 850 0860 or email technical@acsstainless.co.uk

LEEDS
Cross Green Approach
Cross Green Industrial Park
Leeds LS9 0SG
Tel: +44 (0)113 391 8200
Fax: +44 (0)113 391 8209

LONDON
Crown House
Home Gardens
Dartford
Tel: +44 (0)1322 424 510
Fax: +44 (0)1322 424 504

GLASGOW
Festival House
150 Brand Street
Glasgow G51 1DH
Tel: +44 (0)141 314 0048
Fax: +44 (0)141 314 0026

